

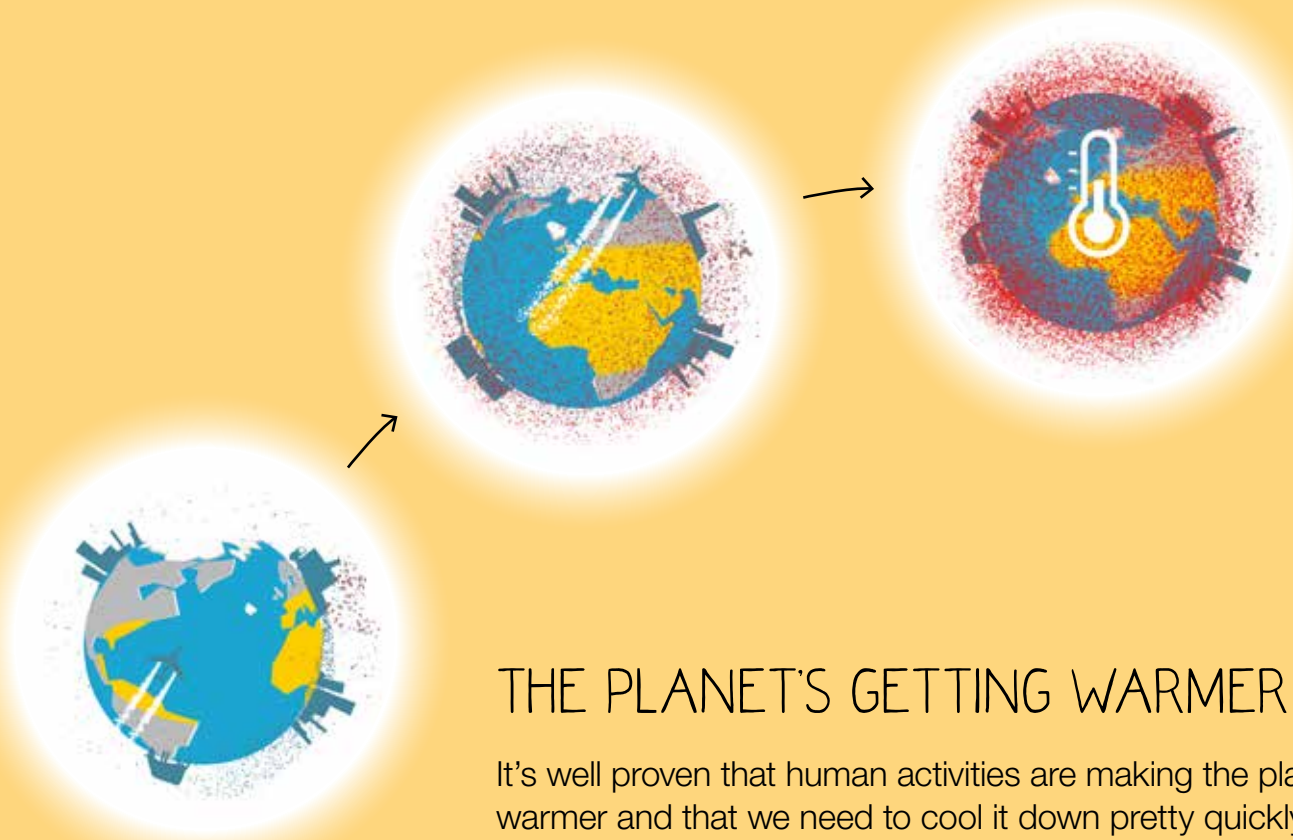
# C<sub>2</sub>RE



CO<sub>2</sub> REDUCTION INITIATIVE

# GLOBAL WARMING

is probably the world's most **serious challenge** and threatens our society & future generations. We all need to do what we can to improve the situation as fast as possible. Here at modulyss, we're rising to this global challenge and selected carpet tiles are now available with low CO<sub>2</sub> emissions in our CO<sub>2</sub>RE CO<sub>2</sub> reduction initiative.



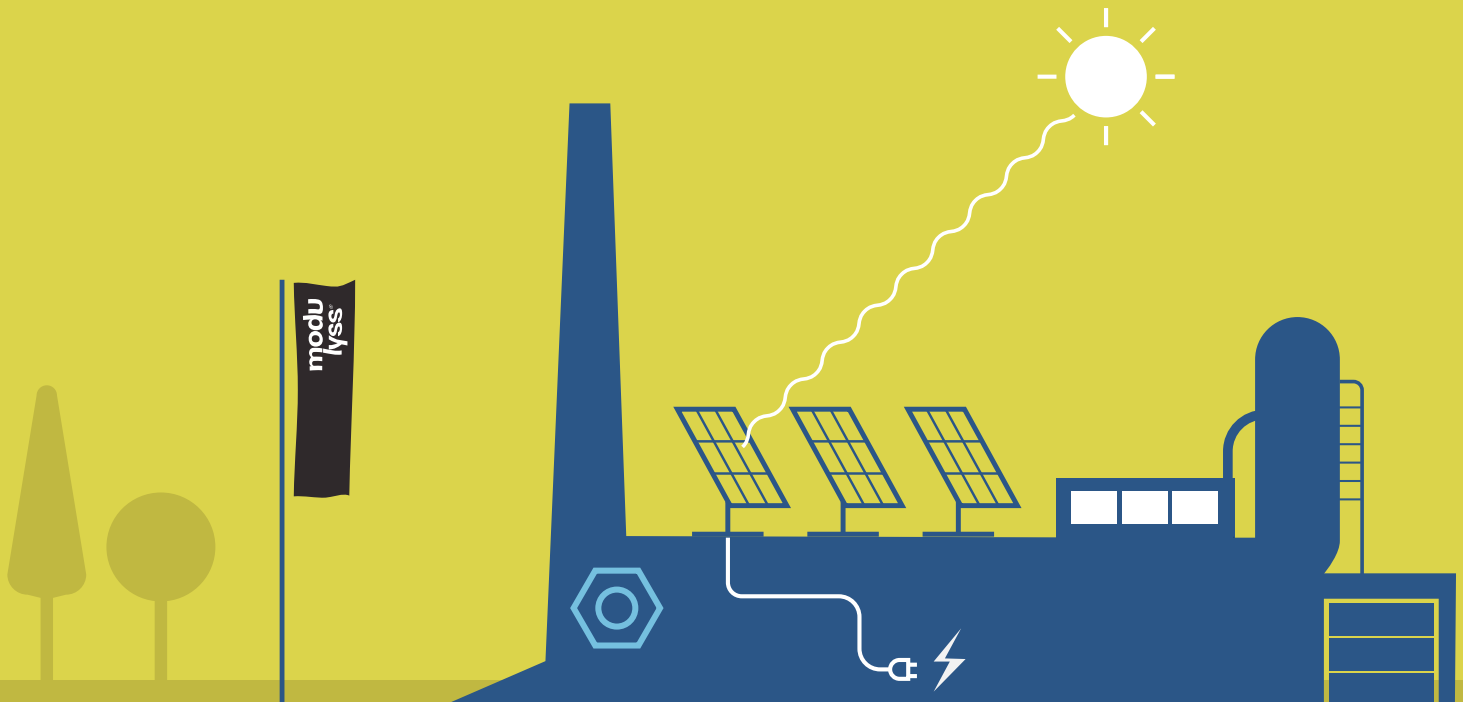
## THE PLANET'S GETTING WARMER

It's well proven that human activities are making the planet warmer and that we need to cool it down pretty quickly. One of the biggest contributors to global warming comes from CO<sub>2</sub> emissions of the modern world and by working together to reduce these, we can have a lasting, more positive impact on future generations.

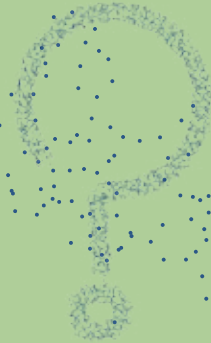
No matter how big or small the actions, we should all do our bit to **reduce our CO<sub>2</sub> emissions** as much as possible and that's where our CO<sub>2</sub>RE initiative comes in.

# TURNING DOWN THE HEAT

Here at modulyss we've been working to reduce our carbon footprint since 2008, taking huge steps in making our products and production processes less impactful on the planet. All of these have helped considerably in reducing our CO<sub>2</sub> emissions. But just like any other company, for now it's impossible to reach zero emissions through production and operational improvements alone. When producing carpet tiles, there is an unavoidable small footprint left behind, but **we are determined to do something about it.**



REST  
CO<sub>2</sub>



## WHY OFFSET?

Currently, the raw materials and technology available lag behind our ambition to make carpet tiles CO<sub>2</sub> neutral through manufacturing alone. So, with this current situation, we've decided that the **CO<sub>2</sub> offset principle of CO<sub>2</sub>RE** is better placed to respond to the challenges ahead. Of course, we are always looking for solutions in-house to improve our material usage and manufacturing; but simply put, at this stage the investment required is prohibitively expensive for the CO<sub>2</sub> reduction achieved. We want to reduce our climate impact as much as possible and so for now, we've chosen to support climate projects.



## MAKING IT NEUTRAL

Carbon offsetting is a proven model that means we can achieve low CO<sub>2</sub> status for our carpet tiles.

Selecting just how best to offset our CO<sub>2</sub> emissions is no easy task and so we've partnered with **Belgium's leading authority on the subject, CO<sub>2</sub>logic**. They have worked with us to make sure CO<sub>2</sub>RE delivers a long-term sustainable model for our offsetting.

## THE PROCESS IS A SIMPLE ONE

- 1** CO<sub>2</sub>RE comes as standard on the Handcraft collection; Moss, Leaf, Willow and Grind.
- 2** Available on request on all other modulyss carpet tile collections.
- 3** modulyss & CO<sub>2</sub>logic calculate remaining greenhouse gas emissions for your project.
- 4** This value is turned into a CO<sub>2</sub> equivalent for which credit are purchased.
- 5** With those credits, modulyss supports a certified climate project to the full CO<sub>2</sub> equivalent.
- 6** Currently, modulyss supports the Paradigm project so it can further reduce greenhouse gas emissions.
- 7** Through CO<sub>2</sub>RE the production of the carpet tiles for your project now are CO<sub>2</sub> neutral.



**1 cookstove**

=

**CO<sub>2</sub>  
reduction**

=



## AN ENTERPRISING SOLUTION

Every credit currently goes to the Paradigm project in Kenya created to **positively impact poverty**, as well as **reduce greenhouse gas emissions**. The social climate project contributes positively to many UN Sustainable Development Goals and also considers Kenya's growing population in a changing landscape where natural resources are becoming more precious every year that passes.



WE HELP REDUCE GREENHOUSE GAS EMISSIONS IN KENYA.

**35% CO<sub>2</sub> REDUCTION**

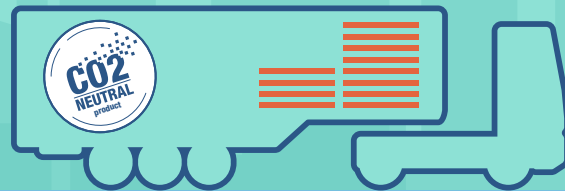
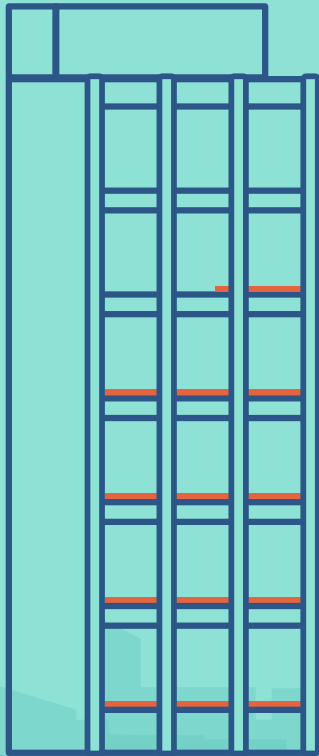


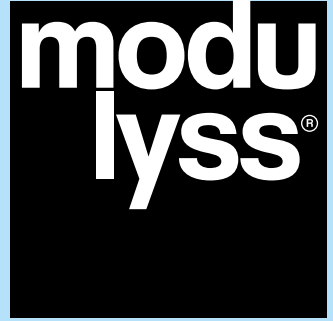


# EMPOWERING YOUR PROJECT WITH CO<sub>2</sub>RE


Your commitment to make a change will be certified by CO<sub>2</sub>logic and validated by third-party certification specialist Vinçotte, as CO<sub>2</sub> Neutral. This CO<sub>2</sub> Neutral label is worn with pride by many businesses and demonstrates a desire to actively calculate, reduce and compensate global climate impact. And that is a worthwhile thing indeed.

So now is the time to start to build a lasting and positive planet for future generations, so **empower your project with CO<sub>2</sub>RE.**





BEGIN YOUR PATH TO  
CERTIFIED CO<sub>2</sub> NEUTRAL CARPET TILES  
FROM MODULYSS BY GETTING IN TOUCH HERE.

A thin, light blue curved arrow pointing from the left towards the contact information.

**Call +32 (0)52 80 80 80  
or mail [info@modulyss.com](mailto:info@modulyss.com)**

© modulyss 2017

modulyss®  
Zevensterrestraat 21  
9240 Zele - Belgium  
T +32 (0)52 80 80 80  
F +32 (0)52 80 82 00  
[info@modulyss.com](mailto:info@modulyss.com)

[www.modulyss.com](http://www.modulyss.com)